



**TELEDYNE**  
**BATTERY PRODUCTS**  
A Teledyne Technologies Company

**COMPONENT MAINTENANCE MANUAL**

**LT-Valve-Regulated Lead-Acid Batteries**

**Part Numbers Applicable to this CMM**

**7639-27**

**7639-30LT**

**7639-34**

**7638-36**

**7638-48P**

## CONTENTS

<u>Section</u>	<u>Description</u>	<u>Page</u>
1	Revisions .....	1
2	Scope .....	2
3	Description of Valve-Regulated Lead-Acid batteries .....	3
	Definition of Battery Specifications .....	4
	State of Charge Vs Voltage .....	5
4	Service Instructions .....	6
5	Charging, Constant Potential .....	8
	Charging, Constant Current .....	9
	Charging, Float .....	9
	Charging, Initial .....	10
6	Routine Maintenance .....	12
	Continued Airworthiness Testing .....	12
	Reconditioning Battery .....	13
	Deep Discharge Recovery .....	13
	Monitoring Batteries in Long Term Storage .....	14
7	Unscheduled Removals .....	16
8	Troubleshooting Guide .....	17
9	Transportation .....	18
10	Recycling .....	19
11	Glossary .....	21
	Appendix A .....	22



**COMPONENT MAINTENANCE MANUAL**

**1. REVISIONS**

<b>Revision</b>	<b>Description of Change</b>	<b>Approved By</b>	<b>Date</b>
NC	New document	JMR	May 3, 2012
A	Revised to correct Maintenance Flow Chart and various directions in Service Manual per review with Embraer	JMR	July 23, 2012
B	Revised / Added temperature conversions from °F to °C	JMR	Dec 19, 2012
C	Revised charging processes, Inspection / service period and minimum capacity requirements for battery approval	JMR	Nov 6, 2013
D	Added part number 7639-30LT	JMR	Apr 2, 2014
E	Added part number 7638-48P	JMR	Sep 3, 2014
F	Revised Inspection /Service Period	JMR	Mar 9, 2016
G	Removed references to TSC-O1V charger; corrected Battery Maintenance Flowchart	JMR	Dec 16, 2016
H	Inserted Figure 2; and Figure 3; corrected references to appropriate Figures; Corrected section reference for Trouble Shooting Guide on Deeply Discharged battery recovery	JMR	May 3, 2017

**Premium LT Valve Regulated Lead Acid Aircraft Batteries By TELEDYNE BATTERY PRODUCTS**



**COMPONENT MAINTENANCE MANUAL**

**2. SCOPE**

This manual provides Maintenance Procedures for Gill 7000 Series LT Valve-Regulated Lead-Acid (LT VRLA) Aircraft Batteries manufactured under FAA Parts Manufacturer Approval number PQ1006NM.

This manual is applicable for the following batteries: 7639-27, 7639-30LT, 7639-34, 7638-36 and 7638-48P.

This manual has been written for the purpose of guidance only; contact Teledyne Battery Products (TBP) Technical Support or additional information.

**The CMM will take precedence over all other printed materials regarding respective batteries. The latest version of the CMM can be found on the Teledyne Battery Products' website at: <http://www.gillbatteries.com/maintenance.aspx>**

Premium LT Valve Regulated Lead Acid Aircraft Batteries By TELEDYNE BATTERY PRODUCTS



### 3. VALVE-REGULATED LEAD-ACID BATTERIES

#### 3.1 DESCRIPTION

3.1.1. The 7000 series LT valve-regulated lead-acid (LT-VRLA) batteries are designed with an optimum lead alloy with tin and copper to provide the best possible electrode characteristics necessary for performance. These LT-VRLA batteries contain electrolyte absorbed in glass-mat separators, with no free electrolyte and are sometimes referred to as “sealed” or “recombinant-gas” batteries.

**WARNING**

**ALL VRLA batteries contain sulfuric acid, which is highly corrosive and which can cause serious physical injury if it comes in contact with skin. It can also cause serious eye injury or blindness if it comes into contact with the eyes.**

**Caution must be exercised to avoid damage to the exterior case which could allow the contents to escape or come in physical contact with external materials or personnel.**

**If a battery case is found to be damaged, handle the battery with care and avoid contact with the skin. Inspect all areas adjacent to the battery for evidence of corrosion.**

3.1.2. TBP valve-regulated lead-acid batteries have vent caps (with valves enclosed) that are sealed in place and cannot be accessed for maintenance. At no time must these vent caps be removed.

**WARNING**

**During normal operation, the batteries will vent very small amounts of gases that must be vented away from the battery and aircraft. The venting mechanisms consist of nozzles (in the battery cover) and vent tubes that are designed to exhaust the battery compartment. Ensure that the vent tubes are not restricted or disabled in any way.**

3.1.3. The electrolyte is contained in an absorptive glass-mat (AGM) separator that retains and immobilizes the electrolyte. These batteries can be operated in any orientation without spilling electrolyte.

3.1.4. The battery consists of twelve cells connected in series internally, making up a 24V battery. These cells are not replaceable.



**COMPONENT MAINTENANCE MANUAL**

Premium LT Valve Regulated Lead Acid Aircraft Batteries By TELEDYNE BATTERY PRODUCTS

3.1.5. Each cell is constructed of premium grade LT electrodes (plates) that are electrically isolated by AGM separators.

3.2 DEFINITION OF BATTERY SPECIFICATIONS:

3.2.1 TBP battery ratings are defined by the following:

3.2.1.1 **The One-Hour Rate**

This is the rate of discharge a battery can endure for one hour with the battery voltage at or above 1.67 volts per cell, or 20 volts for a 24 volt lead-acid battery.

Capacity, measured in Ampere Hours or Ah, is the product of the discharge rate and time (in hours) to the specified end voltage.

3.2.1.2 **The Emergency Rate**

This is the rate of discharge a battery can endure for thirty minutes with the battery voltage at or above 1.67 volts per cell, or 20 volts for a 24 volt lead-acid battery.

The Emergency Rate is the total essential load, measured in amperes, required to support the essential bus for thirty minutes.

3.2.1.3  **$I_{pp}$ , Peak Power Current:** This is the discharge current delivered at 0.3 seconds while testing during a 15 second power discharge controlled to maintain a constant terminal voltage of half the nominal battery voltage.

**$I_{pr}$ , Constant Voltage Current:** This is the discharge current at the conclusion of a 15 second power discharge controlled to maintain a constant terminal voltage of half the nominal battery voltage.

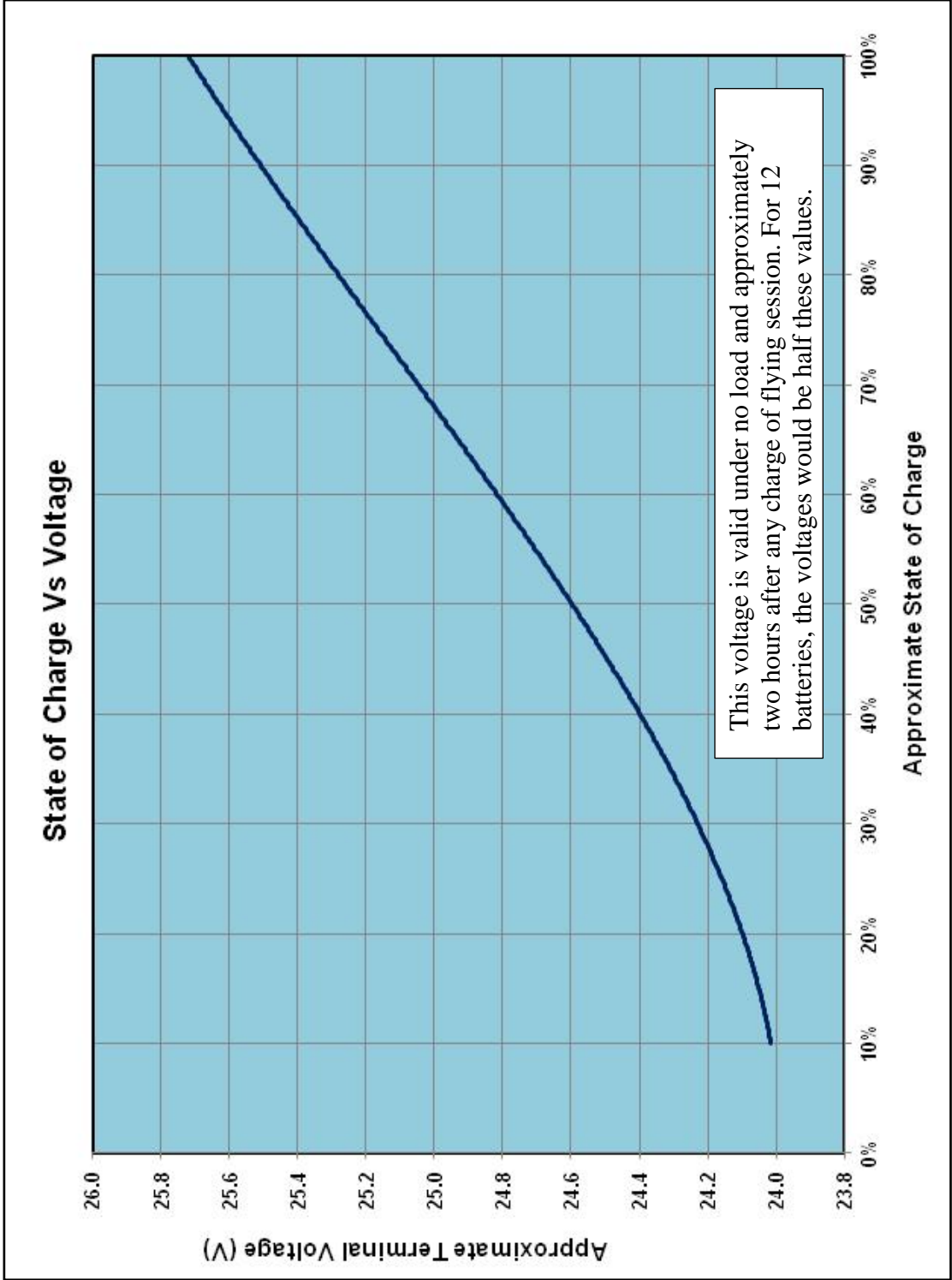
3.2.2 State of charge using voltage measurements should be used as a guide only. Figure 1 indicates the relationship between Battery Open-Circuit Voltage (OCV) and % State-of-Charge (SOC). **Note: This voltage measurement is valid when the battery has been off charge for at least two hours.**

3.2.3. All valve-regulated batteries operate best in controlled temperatures. Excessive excursions above 100°F can shorten the life of lead-acid batteries. The optimum operating temperature is around 80°F.

Available capacity declines as the temperature drops. This decline is primarily related to the state of the electrolyte and easily recoverable once the battery has warmed up sufficiently.



**Figure 1**



**Premium LT Valve Regulated Lead Acid Aircraft Batteries By TELEDYNE BATTERY PRODUCTS**



## **4. SERVICE INSTRUCTIONS**

### **4.1 SHIPMENT OF BATTERIES**

- 4.1.1 The batteries are shipped upright, conditioned and fully charged.
- 4.1.2 Each battery is identified with a unique serial number label and indelibly marked manufacturing date on the right side of the battery (side adjacent to the positive terminal, with the terminals facing forward). Please use this manufacturing date for future reference.

### **4.2 INSPECTION FOR SHIPPING DAMAGE**

- 4.2.1 Upon receipt, the packages must be examined for any shipping damage before they are placed in storage or use. If any damage is noted, contact the shipping company immediately.
- 4.2.2 Type verification can be performed by checking the serial number label on the packaging against the accompanying FAA Form 8130-3 or Certificate of Compliance.

### **4.3 STORAGE REQUIREMENTS**

- 4.3.1 TBPs 7000 series LT VRLA batteries can be stored between -20°F (-29°C) and +110°F (43°C). Ideal battery storage temperature is 80°F (27°C). Storage at temperatures other than these, can lead to permanent damage.

Storage temperatures will determine inspection requirements. These requirements are identified under this section.

- 4.3.2 TBPs 7000 series LT VRLA batteries have a maximum of 24 months of inspection-free storage life, IF stored at temperatures between 40°F (4°C) to 80°F (27°F).
- 4.3.3 If stored between 95°F (35°C) to 110°F (43°C), the battery must be inspected on a monthly basis. It is not recommended to store any VRLA batteries at these temperatures for excessive periods of time (maximum 3 months storage). Prolonged storage at high temperatures (over 110°F or 43°C) will reduce battery life due to various deleterious reaction mechanisms at higher temperatures.

During these monthly inspections, the battery must be recharged per Section 5.2 and returned to storage. If the storage period has exceeded the time recommended in this section, contact Teledyne Battery Products for disposition.

- 4.3.4 All batteries returned from service after initial use must be fully charged per Section 5.2 and stored. The storage start date and battery voltage must be





## COMPONENT MAINTENANCE MANUAL

logged on the outer package or marked on the battery. The inspection intervals for these batteries will be the same as outlined in section. See Figure 1, for state of charge at various voltages.

- 4.3.5 Long term storage at temperatures less than 0°F (-18°C) will not detrimentally affect the life of the battery, provided the battery is at a reasonably high state of charge (over 80%) before placing in storage. The battery may be stored at lower temperatures, but will need to be warmed up to 0°F (-18°C) before use.
- 4.3.6 Please call TBP technical support if there are any questions regarding shelf life and recharge periods.

### 4.4 INITIAL INSPECTION

- 4.4.1 Visually inspect the battery to ensure there is no damage. Remove the protective cap over the terminal pins and ensure that the pins are clean and there is no corrosion. The pins have been installed with the correct torque at the factory and do not require any re-seating. Call TBP Technical Support if you find any discrepancy.
- 4.4.2 DO NOT remove the lid. The vents are sealed in the cover and cannot be removed for maintenance.
- 4.4.3 Inspect the open circuit voltage and review handling requirements, according to the measured voltage, per Section 5.5. Before placing the battery in service, it must be fully charged. Review Section 5 as needed.

For basic charging, constant potential is the preferred charging method. Deep-discharge recovery will usually require application of Constant-Current and/or Constant-Potential charging (see Sections 6.3 and 6.4). If there are any concerns with recharging, please contact Tech Support at Teledyne Battery Products.

#### WARNING

**ALL VRLA batteries contain sulfuric acid, which is highly corrosive and which can cause serious physical injury if it comes in contact with skin or if inhaled. It can also cause serious eye injury or blindness if it comes into contact with the eyes.**

**Caution must be exercised to avoid damage to the exterior case which could allow the contents to escape or come in physical contact with external materials or personnel.**

**If a battery case is found to be damaged, handle the battery with care and avoid contact with the skin. Inspect all areas adjacent to the battery for evidence of corrosion.**

Premium LT Valve Regulated Lead Acid Aircraft Batteries By TELEDYNE BATTERY PRODUCTS



## 5. CHARGING

### 5.1 OVERVIEW

- 5.1.1 Please review the charging method (Constant Current or Constant Voltage) before commencing. The preferred method is Constant Voltage. Refer to Section 5.2 and Section 5.3.
- 5.1.2 Correct charging is very important and will affect the overall life of the battery. The charging process is not 100% efficient due to losses resulting from internal resistance and will typically require 10% to 20% more recharge than the amount of capacity removed during discharge.
- 5.1.3 Undercharging occurs when the battery is repeatedly subjected to time-limited charging; allowing residual lead sulfate to eventually increase in the plates, making it difficult to fully recharge the battery. In this case the battery will suffer a permanent loss of capacity.
- 5.1.4 Overcharging generally occurs when either constant-current charging is used without adequate control of total time on-charge or the voltage limit in constant-voltage charge is higher than the recommended range (see Section 5.2.4). Overcharging a battery will corrode the positive grids and break-down the water component in the electrolyte to hydrogen and oxygen (electrolysis). This is quite detrimental to the life of VRLA batteries since the water cannot be replaced.

### 5.2 STANDARD CONSTANT-POTENTIAL (OR CONSTANT VOLTAGE, CP OR CV)

- 5.2.1 These chargers are generally designed to provide a constant voltage source, with selectable initial current rates. **See recommended charger voltage output in 5.2.4.** Model variants provide selectable charge voltage and initial charge rates. Higher output current will reduce recharge time.
- 5.2.2 CV charging will result in a high initial charging current which will start dropping off when the voltage gradient between the charger and battery begins to decrease because the current in any circuit is directly proportional to the voltage gradient across that circuit.
- 5.2.3 Typically, the charger will regulate to around 28.6V for 24V batteries or 14.3V for 12V batteries. As the battery approaches the charger output voltage, charge current will drop below 0.5 amperes.
- 5.2.4 The battery must be connected to the charger with output voltage set between 28.2V up to 29.0V for 24V batteries and left on until the charge rate drops below 0.5 amperes. At this point, disconnect the charger from its power source first before disconnecting the battery from the charger – to eliminate any sparks.

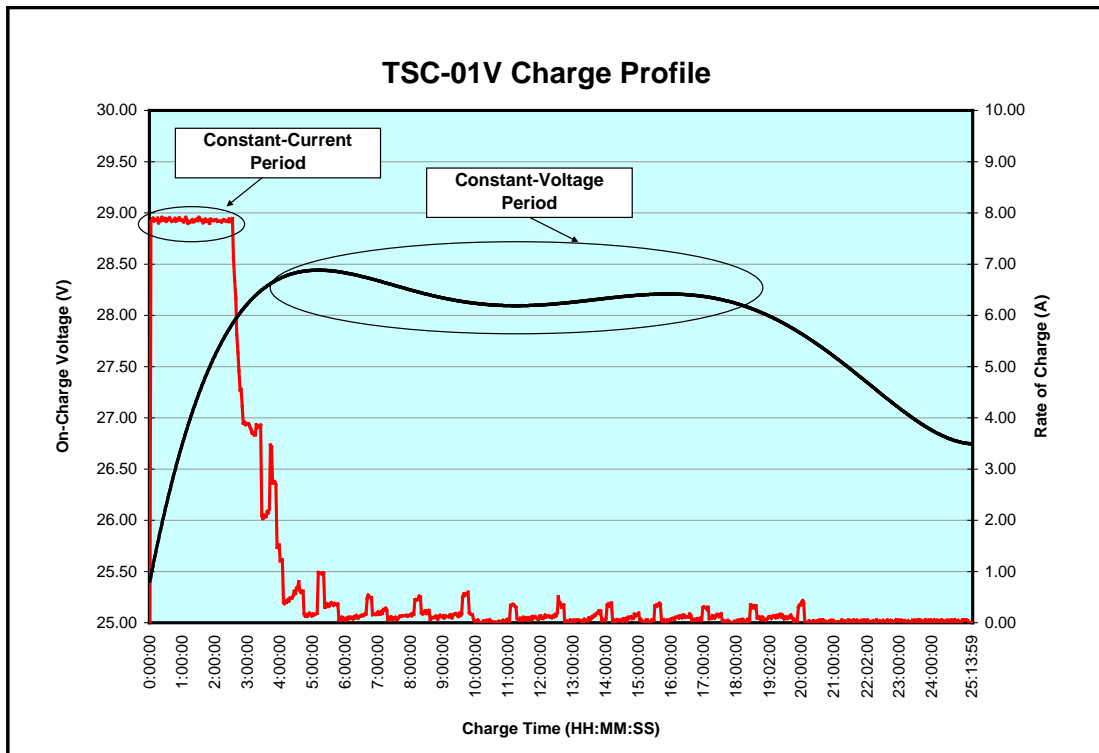


# COMPONENT MAINTENANCE MANUAL

Note: Unless the charger is of a type that turns off automatically, the charger and battery must be disconnected once the charge rate drops below 0.5 ampere.

- 5.2.5 Alternatively, constant-voltage charging can be temperature-compensated for better control. Note Figure 3 for Temperature Compensated Charge Voltages.
- 5.2.6 Figure 2 represents TBPs TSC-O1V Charger profile. This is a specialized charger that provides a fixed rate (constant-current) charge initially as the battery voltage approaches the charger output voltage. Once the battery has achieved the charger output voltage, the charge current starts to drop down to less than 0.5 amperes.

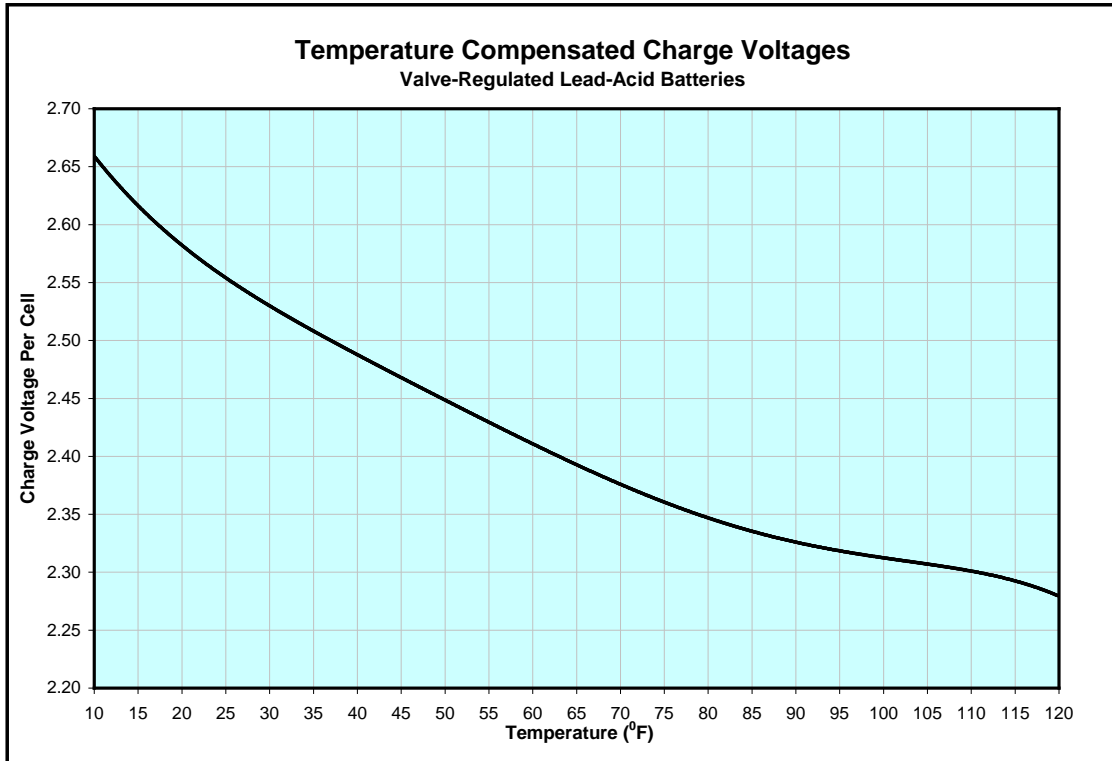
Figure 2



Premium LT Valve Regulated Lead Acid Aircraft Batteries By TELEDYNE BATTERY PRODUCTS



Figure 3



Premium LT Valve Regulated Lead Acid Aircraft Batteries By TELEDYNE BATTERY PRODUCTS

**5.3 STANDARD CONSTANT-CURRENT (CI)**

- 5.3.1 These chargers must be capable of providing an output of ~ 35 volts and ~ 8 amperes (with selector switch) and include a timer that can terminate charging when the required charge input is attained.
- 5.3.2 The ampere hours of energy restored is the product of charge current (in amperes) and the time (in hours).
- 5.3.3 During such charging, the on-charge battery voltage will reach 32V-33V. This is standard for such a charge method. Please use charge rate and times as indicated in Sections 5.5, 6.4 and 6.5.
- 5.3.4 Since these chargers are designed to provide a constant current throughout the charging period, this method can lead to overcharging if not controlled. In order to control the charge input, these chargers must have a shut-off timer.

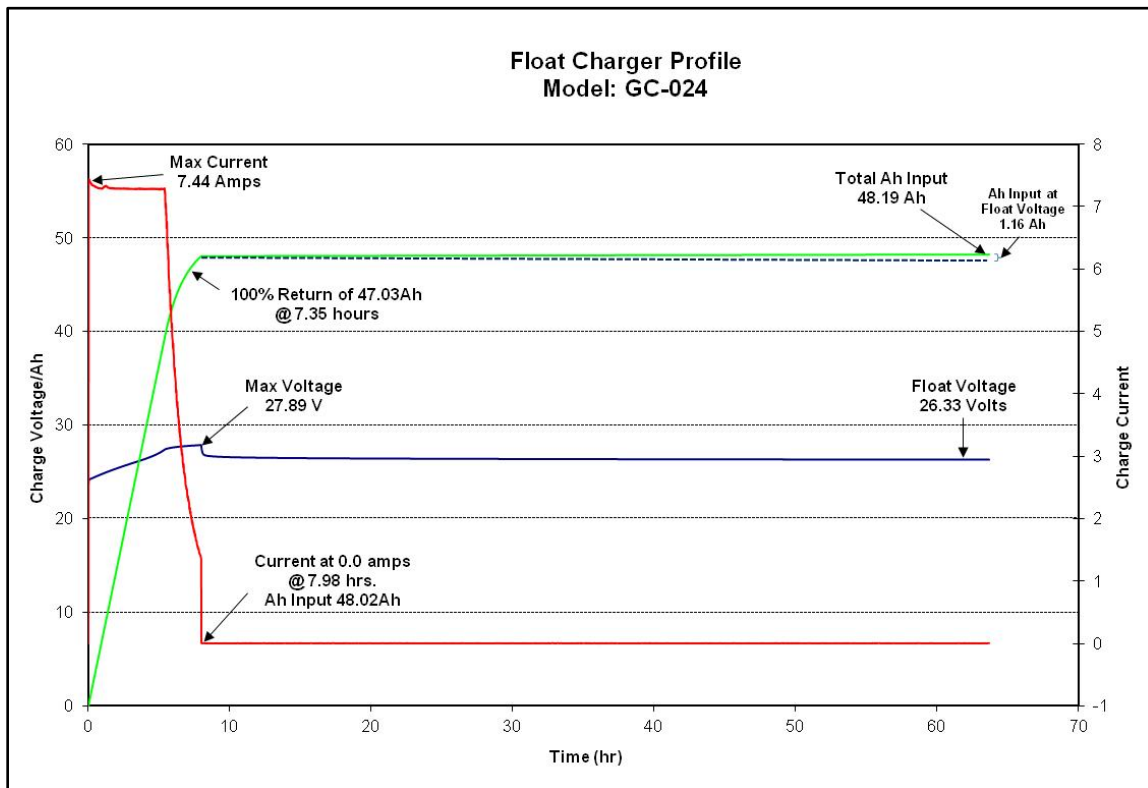


Premium LT Valve Regulated Lead Acid Aircraft Batteries By TELEDYNE BATTERY PRODUCTS

### 5.4 FLOAT CHARGING

- 5.4.1 This method of charging is essentially accomplished using a charger that can provide a constant potential charge at a lower voltage, typically around 26.4V ± 0.2V. See Figure 4 for charger performance.
- 5.4.2 Teledyne recommends using the GC-024 charger, which is a constant potential charger that will revert to a float charger after the battery has been charged at 28.5V ± 0.3V.
- 5.4.3 The batteries may be kept on float charge for up to six months at this voltage.

**Figure 4**



### 5.5 INITIAL CHARGING

- 5.5.1 All general charging will be accomplished using the Constant Potential charge regime, except when situations require specific charging treatment.



**COMPONENT MAINTENANCE MANUAL**

- 5.5.2 When batteries are left on shelf for a longer period, they will have to be reviewed using open circuit voltage (OCV) as the primary guide, with the State of Charge Vs Voltage graph, Figure 1.
- 5.5.3 The requirement at initial installation is to ensure battery will provide 100% capacity. Inspect battery voltage and reference to Figure 1 to verify state of charge.
- 5.5.4 For various battery voltages, Table 1 provides the necessary charging and / or conditioning that would be required.
- 5.5.5 Please contact Teledyne Tech Support if there are any situations that are not clear.

**Table 1  
INITIAL CHARGING PROCESS**

Battery Voltage (Open Circuit Voltage, OCV)	Process
<24V	Discharge the battery at the one-hour rate to 20V. Recharge at constant potential (CP) of 28.2 to 29 volts until the charge rate drops to 1A. Then charge at constant current (CC) of 1A for 12 hours. Discharge the battery at the one-hour rate to 20V (see Appendix A). The battery must achieve at least 100% (1 hr) of this rating. <ul style="list-style-type: none"> <li>- If the battery passes, recharge it using CP and CC method</li> <li>- If not, repeat CP and CC charge followed by one more discharge. If the battery fails to meet capacity, call Teledyne Tech Support for further direction.</li> </ul>
24V-25.5V	Discharge at one-hour rate to 20V (see Appendix A) – then recharge at constant potential of 28.2 volts to 29 volts until charge current drops to 0.5A or less.
> 25.5V	Charge at constant potential of 28.2 volts to 29 volts until charge rate (current) is equal to or less than 0.5A

**Premium LT Valve Regulated Lead Acid Aircraft Batteries By TELEDYNE BATTERY PRODUCTS**



## **6. ROUTINE MAINTENANCE**

### **6.1 INSPECTION/SERVICE PERIOD**

After initial installation, Gill requires the 1<sup>st</sup> capacity check of the battery to be performed at 12 months and thereafter at 6 months. Replace the battery at 24 months or 600 Flight Cycles. Please refer to aircraft manufacturer's guidelines for further clarification.

#### **WARNING**

**The battery must be removed from the installation and serviced in a well-ventilated designated area. During servicing, the battery will generate oxygen and hydrogen gases, which can be explosive under the right conditions.**

#### **6.1.1 Battery Integrity**

Visually inspect the battery for any signs of cracks, corrosion, unusual terminal pin wear or discoloration on the pins.

#### **WARNING**

**ALL VRLA batteries contain sulfuric acid, which is highly corrosive and which can cause serious physical injury if it comes in contact with skin or if inhaled. It can also cause serious eye injury or blindness if it comes into contact with the eyes.**

**Caution must be exercised to avoid damage to the exterior case which could allow the contents to escape or come in physical contact with external materials or personnel.**

**If a battery case is found to be damaged, handle the battery with care and avoid contact with the skin. Inspect all areas adjacent to the battery for evidence of corrosion.**

### **6.2 CONTINUED AIRWORTHINESS REQUIREMENT – CAPACITY TESTING**

Figure 4, Battery Maintenance Flow, provides an overview of Battery Maintenance. During this inspection process the following components must be reviewed:

6.2.1 Measure and record the battery voltage.

6.2.2 Charge the battery using Table 2.



**Table 2  
CHARGING PROCESS**

Battery Voltage (Open Circuit Voltage, OCV)	Process
<24V	Discharge the battery at the one-hour rate to 20V. Recharge at constant potential (CP) of 28.2 to 29 volts until the charge rate drops to 1A. Then charge at constant current (CC) of 1A for 12 hours.
24V-25.5V	Discharge at one-hour rate to 20V (see Appendix A) – then recharge at constant potential of 28.2 volts to 29 volts until charge current drops equal to or less than 0.5A.
> 25.5V	Charge at constant potential of 28.2 volts to 29 volts until charge rate (current) is equal to or less than 0.5A

**Premium LT Valve Regulated Lead Acid Aircraft Batteries By TELEDYNE BATTERY PRODUCTS**

- 6.2.3 Allow the battery to rest for 1 hour before starting the discharge test.
- 6.2.4 The battery should be discharged at the one hour rate (see Table 3, Appendix A) to an end voltage of 1.67 volts per cell or 20 volts (per IEC 60952-1). Measure the time. The battery must achieve at least 85% of the rated time (or 51 minutes at the 1 hour rate).  
  
If the first discharge time is less than 51 minutes, condition charge the battery per Section 6.3 and repeat the discharge test. This conditioning charge may be repeated once more, if needed, to ensure capacity is better than 85%.
- 6.2.5 If the second discharge fails to deliver at least 51 minutes, the battery should be rejected. Call Gill Technical Support for further details.
- 6.2.6 Once the battery has passed all required inspections and after it is fully recharged using constant-voltage charging methods, the battery is ready for installation.

**6.3 RECONDITIONING BATTERY**

- 6.3.1 Discharge the battery at the one hour rate, to the end voltage of 20V. If the battery is already below this voltage, skip this step.
- 6.3.2 Charge the battery at constant potential of 28.6V± 0.4V until the charge rate drops to 1A, followed by a constant current charge at 1A for 12 hours.
- 6.3.3 Repeat the discharge test per Section 6.2.4, followed by a recharge per Section 6.3.2





6.3.4 The battery should achieve full capacity in 2 cycles. If it does not, reject the battery.

#### **6.4 DEEP-DISCHARGE RECOVERY**

6.4.1 Deep discharge is usually indicated by a battery voltage of less than 24 volts. A battery which has been deeply discharged can be recharged using constant-current charging techniques for best recovery.

6.4.2 Discharge the battery at the one hour rate (see Table 3) until the battery drops to 20V.

6.4.3 Recharge the battery at a constant current charge rate of 1.0A for a total input (in ampere-hours) of 120% of the one-hour capacity, which is determined as follows: For example, for a one-hour capacity of 27 Ah, the charge time is determined as follows:

$$1.2 (120\% \text{ input}) \times 27\text{Ah} = 32.4 \text{ Ah (Ampere-hours) needed.}$$

At the charge rate of 1.0 amperes, the total charge time would be:  
 $32.4\text{Ah}/1.0\text{A} = 32.4 \text{ hours.}$

6.4.4 After a pause of about 1 hour, discharge the battery at the one hour rate (see Table 2) until the battery drops to 20V. Record the time to 20V. If it is greater than 85% of specification (see Appendix A), recharge per Section 5.2 and return to use. If not, continue to Section 6.4.5.

6.4.5 Charge the battery at constant potential of  $28.6\text{V} \pm 0.4\text{V}$  until the charge rate drops to 1A, followed by a constant current charge at 1A for 12 hours.

6.4.6 Discharge the battery at the one hour rate (see Table 2) until the battery drops to 20V. The battery should be at least 85% of capacity. If the battery is lower than 85%, repeat step 6.4.6 one more time. If the battery does not provide more than 85% of the rated specification, it should be rejected.

6.4.7 Avoid subjecting a battery to frequent deep discharges as this can reduce the useful life of the battery.

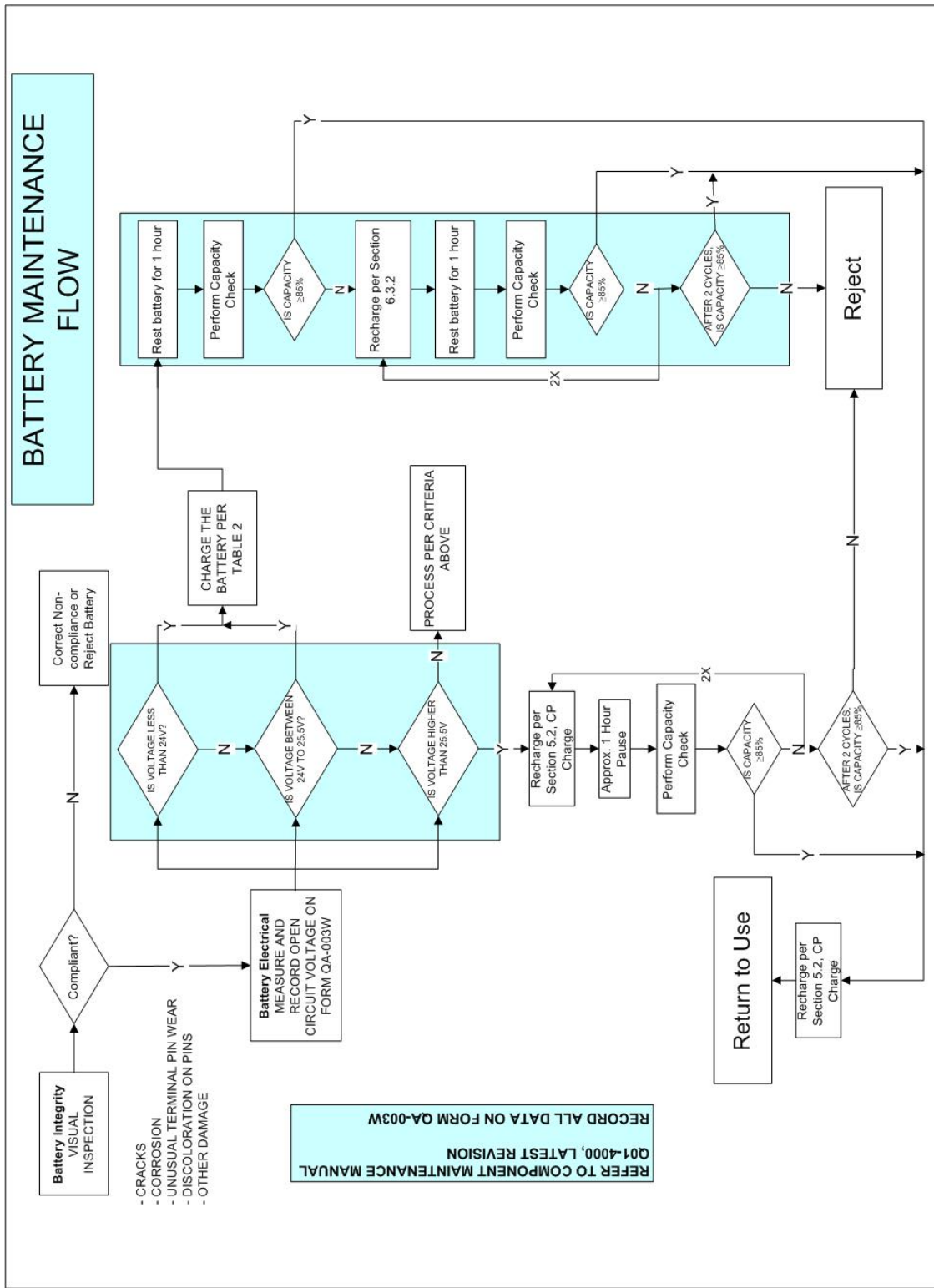
#### **6.5 MONITORING BATTERIES IN LONG-TERM STORAGE**

After storage or before installation on aircraft, follow the guidelines below. Refer to Section 4.3.

6.5.1 If the batteries are stored for two years at recommended temperatures, the batteries can be recharged at constant current of 1A for 120% of the one hour



**Figure 5, Battery Maintenance**



All voltages refer to resting voltages



## 7. UNSCHEDULED REMOVALS

- 7.1 Unscheduled removals may be required when the battery has been inadvertently discharged or has a premature failure. Recharging the battery using Constant Potential method described in Section 5.2 should be attempted. Perform a capacity check as outlined in Section 6.2. If the battery fails to provide specified capacity as noted in Table 2, Appendix A, it should be rejected.

Premium LT Valve Regulated Lead Acid Aircraft Batteries By TELEDYNE BATTERY PRODUCTS



**COMPONENT MAINTENANCE MANUAL**

**8. LT VRLA TROUBLE-SHOOTING GUIDE**

PROBLEM	CAUSE	RECOMMENDATIONS
Battery has low capacity	Battery is at end of life.	Replace battery.
	Battery has not been charged correctly	Refer to Section 5 for charging options
Will not come up to full charge.	Aircraft charging voltage may be lower than required for application.	Contact Aircraft Technical Support for assistance.
Will not hold charge.	Flight legs too short to charge the battery sufficiently.	Remove the battery from the aircraft and recharge when necessary.
	Battery held at high ambient temperatures	Remove battery from aircraft, recharge as required.
	Equipment left on accidentally, battery is discharged.	Recharge per Section 5; if deeply discharged, follow Section 6.4.
	Loose connections; corrosion	Clean and neutralize connections; tighten all connections
	Quick disconnect worn beyond tolerance.	Check Cannon or Elcon type connectors for good contact (see 7.2) with Teledyne Go-NoGo gauge part number 3600-51.
	Battery could be shorting under load.	Perform airworthiness test per Section 6.2
	Battery could be self-discharging due to low state of charge. Sulfation can build up – based on repeated undercharge situations – or Excessive sulfation build-up caused by leaving the battery in a discharged state for an extended period of time.	Recharge per Section 5; if deeply discharged, follow Section 6.4.
Battery life too short.	Possible excessive use of starter and other electrical equipment.	Remove and recharge the battery; reduce equipment load or use an approved higher capacity battery.
	Application.	Ensure that battery selection is correct for the application.  Infrequent flying will lead to gradual discharge of battery, especially if the breaks between flying are over three weeks. Please review directions under Managing Periods of Non-Use under SERVICE.  Ensure battery is not subjected to excessive vibration or high temperatures in service.
	Charging variations such as overcharging or chronic undercharging brought about by short flights.	Overcharging could be eliminated by inspecting and correcting charge voltages.  Excessive undercharging (very short flights) should be compensated by periodic charging of battery.

**Premium LT Valve Regulated Lead Acid Aircraft Batteries By TELEDYNE BATTERY PRODUCTS**



**9. TRANSPORTATION**

- 9.1 Gill LT VRLA batteries are classified as “Nonspillable” and are exempted from all other requirements of 49 CFR, Chapter 1, Subchapter C, Parts 106 – 180, as determined in:
- a) US Department of Transportation’s 49CFR, Chapter 1, Part 173.159, paragraph “d”
  - b) IATA/ICAO Packing Instructions 806, Provision A67

Premium LT Valve Regulated Lead Acid Aircraft Batteries By TELEDYNE BATTERY PRODUCTS



## 10. RECYCLING

### 10.1 MATERIAL SAFETY DATA SHEETS

10.1.1 The MSDSs can be downloaded as needed from the Gill website:  
[www.gillbatteries.com](http://www.gillbatteries.com)

### 10.2 RECYCLER LOCATIONS

10.2.1 All parts of spent lead-acid batteries are recyclable. Generally, batteries are collected by retailers and wholesalers who send large quantities to battery recyclers for reclamation. Battery recyclers are permitted hazardous waste treatment recycling facilities. If you have just a few batteries you should contact your local battery retailers or wholesalers.

10.2.2 Recycler in California:

RSR Quemetco, Inc.  
720 South 7th Avenue  
City of Industry, CA 91745  
(800)527-9452

10.2.3 The California Department of Toxic Substances Control publishes an annual listing of commercial hazardous waste recyclers, which also includes facilities outside of California. A copy of this publication, the "Directory of Industrial Recyclers" may be obtained by calling (916) 324-2423, or writing to the:  
California Waste Exchange Resource Recovery Unit  
Hazardous Waste Management Program  
Department of Toxic Substances Control  
P.O. Box 806  
Sacramento, CA 95812-0806

10.2.4 Nation-wide Recycling:

Most retailers, auto parts stores or service outlets that sell new lead-acid batteries will accept a small number (one or two) of spent lead-acid batteries for recycling. If you have a larger quantity to be recycled, call to verify that your chosen outlet can handle a larger quantity of old batteries.

Even in a state where there is no lead-acid battery recycling law, it is common for battery retailers everywhere in the U.S. to accept used lead-acid batteries from customers. The spent batteries collected by retailers are shipped to EPA licensed and regulated facilities for recycling.

For additional information, please use the following web address to locate nation-wide recycling facilities: [www.batterycouncil.org](http://www.batterycouncil.org)



### **10.3 INTERNATIONAL RECYCLING RESOURCES**

10.3.1 British Battery Manufacturers Association  
26 Grosvenor Gardens  
London SW1W 0GT  
Direct Tel: +44 207 838 4800  
Direct Fax: +44 207 838 4801

10.3.2 SNAM (Societe Nouvelle d'Affinage des Metaux)  
Rue de la Garenne  
St Quentin Sallavier  
38297 La Verpilliere Cedex  
France  
Telephone: +33 74 945 985  
Battery re-processing.

10.3.3 You can also locate a recycling facility through the following Call2Recycle (a program of Rechargeable Battery Recycling Corporation – RBRC) website:  
<http://www.call2recycle.org/>





## COMPONENT MAINTENANCE MANUAL

### 11. GLOSSARY

Active material	The formed (charged) material on the positive and negative electrodes (plates).
AGM	Absorptive Glass Mat, a non-woven fiberglass separator that holds the electrolyte.
Ah	Ampere-hour; the standard designation of capacity units for batteries.
CFR	Code of Federal Regulations.
Electrolyte	The liquid added to a battery that is capable of conducting ions between the two electrodes.
Electrolysis	Decomposition of an electrolyte by the action of an electric current flowing through the electrodes (positive and negative plates).
IATA	International Air Transport Association.
ICAO	International Civil Aviation Organization.
IEC	International Electrotechnical Commission.
$I_{pp}$	Peak current delivered at 0.3 seconds into a 15 second controlled discharge at a constant terminal voltage of half the nominal battery voltage.
$I_{pr}$	Discharge current at the conclusion of a 15 second controlled discharge at a constant terminal voltage of half the nominal battery voltage
Nonspillable	Refers to the ability of the battery to retain the electrolyte when subjected to tests identified under US DOT Reg 49 CFR, Part 173.159, paragraph "d".
OCV	Open Circuit Voltage; measured with no loads connected to the battery.
Passivation	Refers to the oxidation of the negative electrode.
Recombination	The process by which oxygen combines (reacts) with the negative active material.
Sponge lead	Fully charged negative plates convert to a very porous pure lead material, often referred as sponge lead since it resembles a sponge under high magnification.
Sulfation	The product of discharge, lead sulfate, formed on both positive and negative plates.
Venting	Means for a battery to release the gases it generates during charging.
VRLA	Valve-Regulated Lead-Acid

Premium LT Valve Regulated Lead Acid Aircraft Batteries By TELEDYNE BATTERY PRODUCTS



**COMPONENT MAINTENANCE MANUAL**

**APPENDIX A**

Table 3

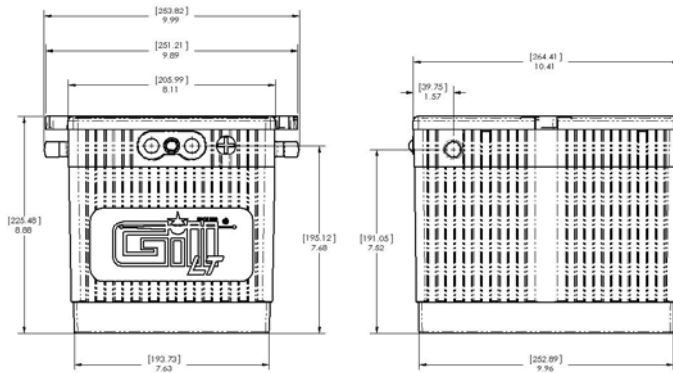
Type	1 Hour Rate (A)	30 Minute Rate (A)
7639-27	27	45
7639-30LT	30	50
7639-34	34	55
7638-36	36	63
7638-48P	48	75

Premium LT Valve Regulated Lead Acid Aircraft Batteries By TELEDYNE BATTERY PRODUCTS



**COMPONENT MAINTENANCE MANUAL**

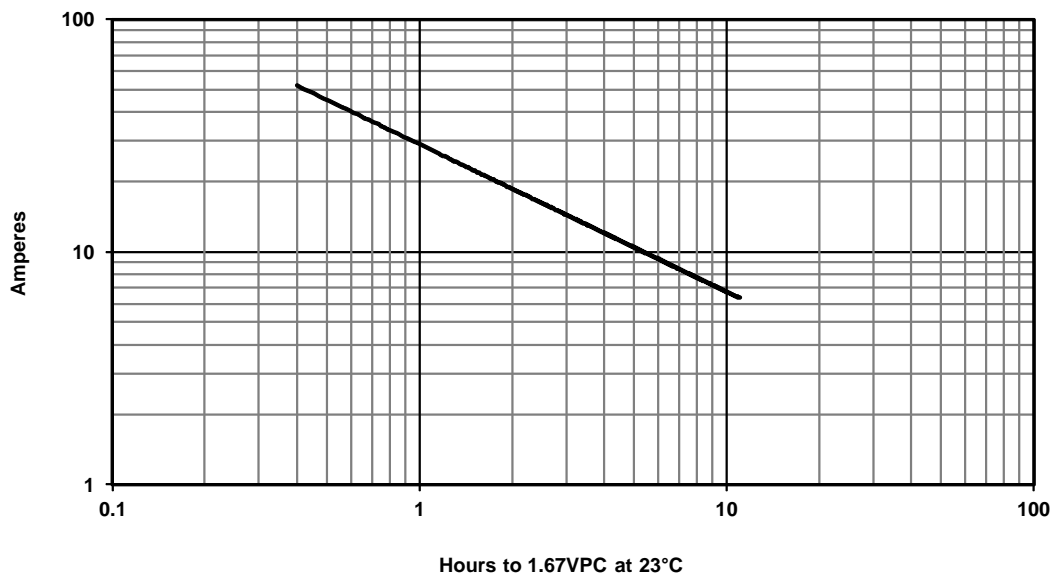
**Battery Part Number: 7639-27**



**Specifications**

Ratings	Electrical Performance at Various Temperatures								Battery Weight (lb)
	30 min. (@ 23°C) 1.67 Volts per cell)	1 hr (@ 23°C) 1.67 Volts per cell)	lpp @ 23°C (A)	lpr @ 23°C (A)	lpp @ -18°C (A)	lpr @ -18°C (A)	lpp @ -30°C (A)	lpr @ -30°C (A)	
Watts	900	540							59
Amps	45	27	1,503	1,002	1,104	734	793	596	
Capacity (Ah)	23	27							
Energy (Wh)	450	540							

7639-27 Performance at 23°C

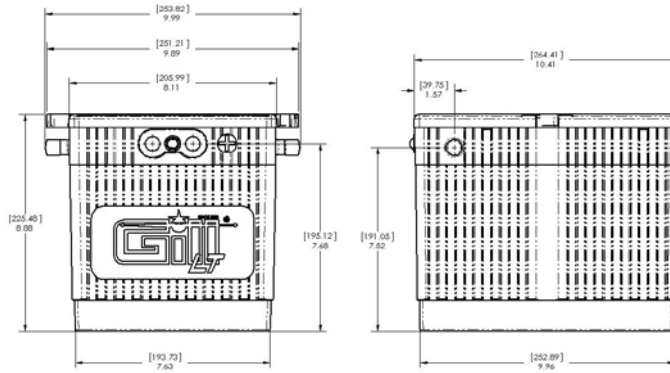


**Premium LT Valve Regulated Lead Acid Aircraft Batteries By TELEDYNE BATTERY PRODUCTS**



**COMPONENT MAINTENANCE MANUAL**

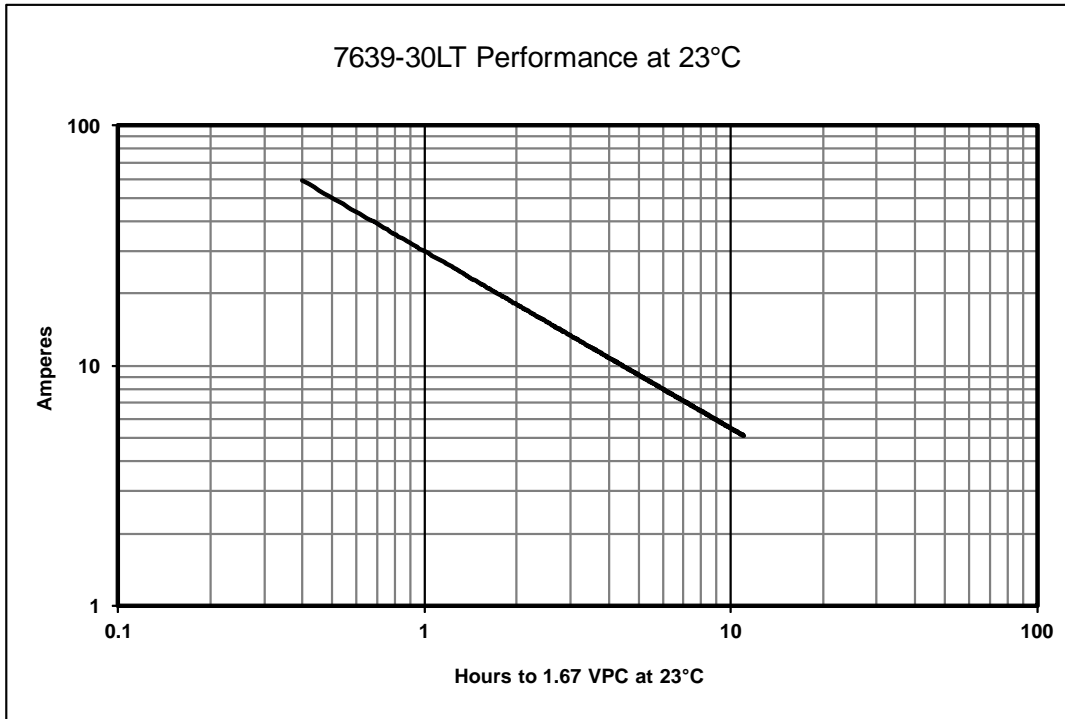
**Battery Part Number: 7639-30LT**



Specifications

Ratings	Electrical Performance at Various Temperatures							Battery Weight (lb)	
	30 min. (@ 23°C 1.67 Volts per cell)	1 hr (@ 23°C 1.67 Volts per cell)	lpp @ 23°C (A)	lpr @ 23°C (A)	lpp @ -18°C (A)	lpr @ -18°C (A)	lpp @ -30°C (A)		lpr @ -30°C (A)
Watts	1,000	600							65
Amps	50	30	1,627	1,173	1,180	870	849	642	
Capacity (Ah)	25	30							
Energy (Wh)	500	600							

7639-30LT Performance at 23°C

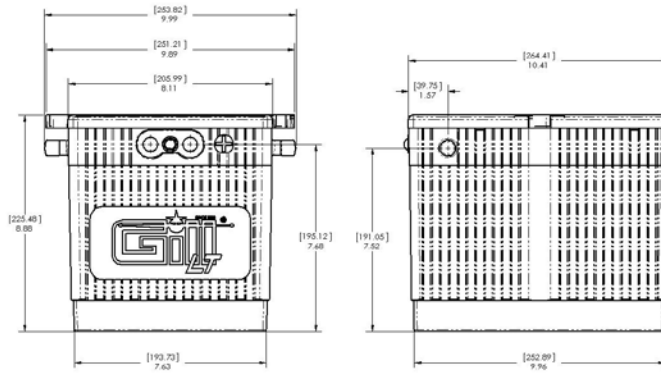


Premium LT Valve Regulated Lead Acid Aircraft Batteries By TELEDYNE BATTERY PRODUCTS



**COMPONENT MAINTENANCE MANUAL**

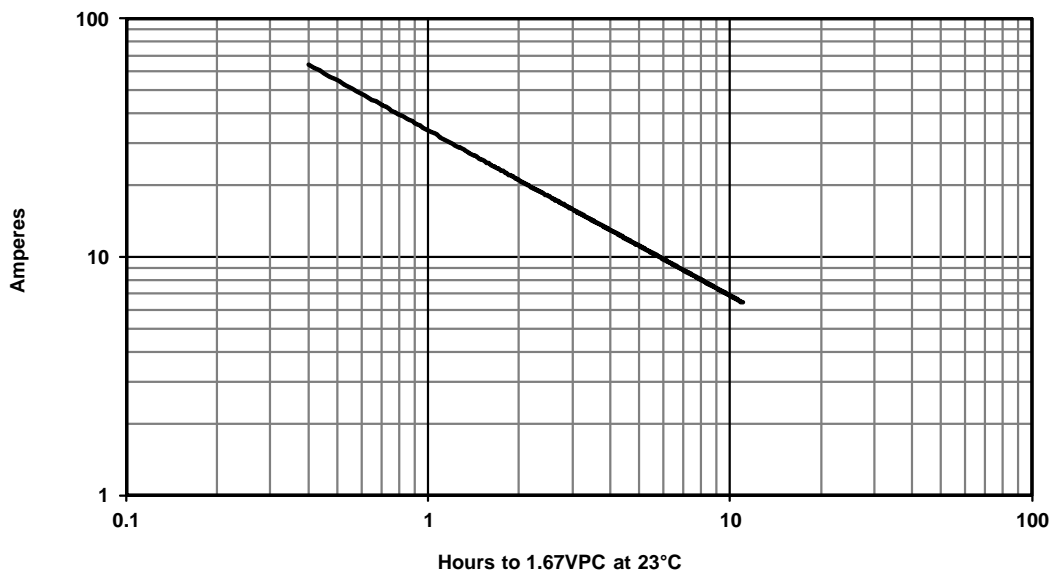
**Battery Part Number: 7639-34**



Specifications

Ratings	Electrical Performance at Various Temperatures								Battery Weight (lb)
	30 min. (@ 23°C 1.67 Volts per cell)	1 hr (@ 23°C 1.67 Volts per cell)	lpp @ 23°C (A)	lpr @ 23°C (A)	lpp @ -18°C (A)	lpr @ -18°C (A)	lpp @ -30°C (A)	lpr @ -30°C (A)	
Watts	1,100	816							62
Amps	55	34	1,636	1,168	962	774	761	604	
Capacity (Ah)	28	34							
Energy (Wh)	550	816							

7639-34 Performance at 23°C

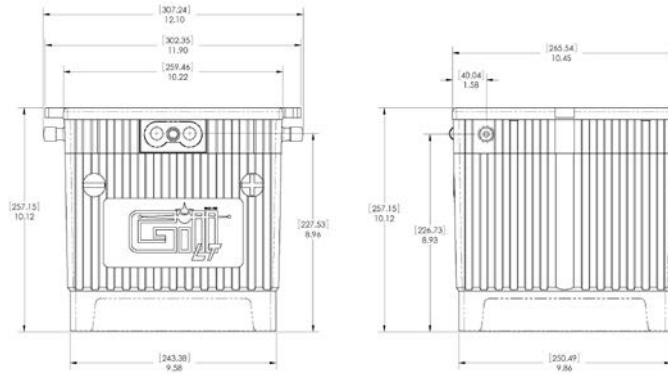


Premium LT Valve Regulated Lead Acid Aircraft Batteries By TELEDYNE BATTERY PRODUCTS



**COMPONENT MAINTENANCE MANUAL**

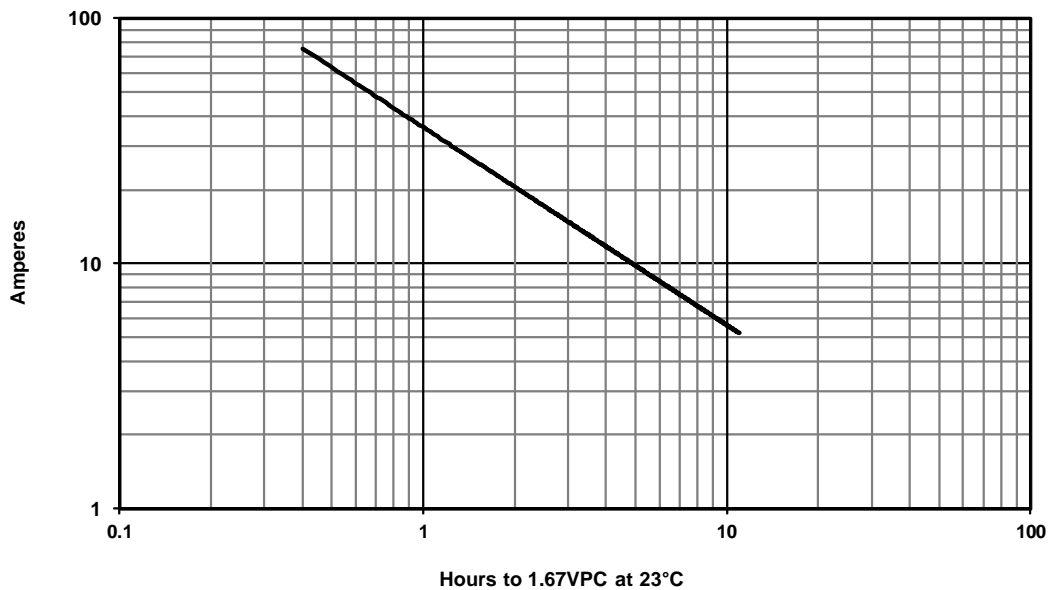
**Battery Part Number: 7638-36**



Specifications

Ratings	Electrical Performance at Various Temperatures							Battery Weight (lb)	
	30 min. (@ 23°C 1.67 Volts per cell)	1 hr (@ 23°C 1.67 Volts per cell)	lpp @ 23°C (A)	lpr @ 23°C (A)	lpp @ -18°C (A)	lpr @ -18°C (A)	lpp @ -30°C (A)		lpr @ -30°C (A)
Watts	1,260	720							84
Amps	63	36	1,958	1,408	1,492	1,128	1,156	741	
Capacity (Ah)	32	36							
Energy (Wh)	630	720							

7638-36 Performance at 23°C

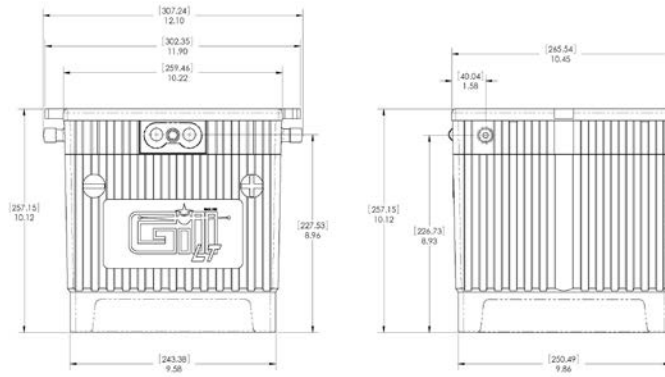


Premium LT Valve Regulated Lead Acid Aircraft Batteries By TELEDYNE BATTERY PRODUCTS



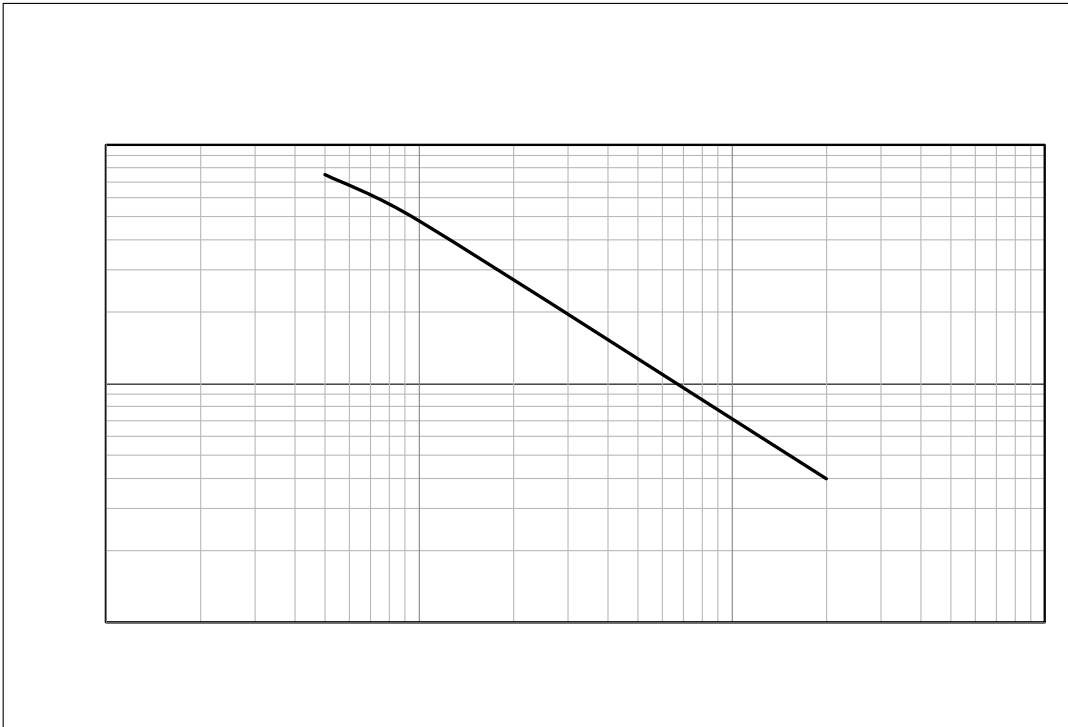
**COMPONENT MAINTENANCE MANUAL**

**Battery Part Number: 7638-48P**



Specifications

Ratings	Electrical Performance at Various Temperatures								Battery Weight (lb)
	30 min. (@ 23°C 1.67 Volts per cell)	1 hr (@ 23°C 1.67 Volts per cell)	lpp @ 23°C (A)	lpr @ 23°C (A)	lpp @ -18°C (A)	lpr @ -18°C (A)	lpp @ -30°C (A)	lpr @ -30°C (A)	
Watts	1,500	960							95
Amps	75	48	1,500	1,275	1,220	1,020	1,010	815	
Capacity (Ah)	38	48							
Energy (Wh)	750	960							



Premium LT Valve Regulated Lead Acid Aircraft Batteries By TELEDYNE BATTERY PRODUCTS